

Contactless MR-element Angle Sensor

CP-16U Series

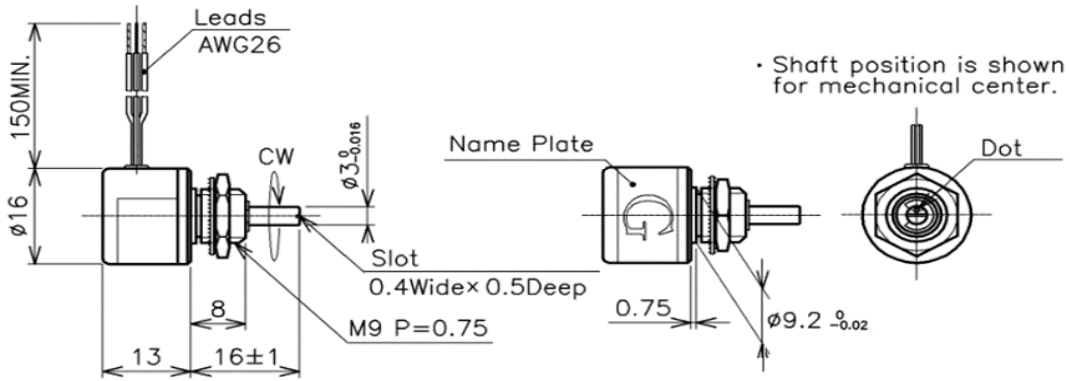


- Contactless MR-element Angle Sensor
- Lower Current Consumption: 0.6mA MAX.
- Effective Electrical Angle: 90° (Option: 120°)
- Independent Linearity: ±1.5%FS
- Low Torque

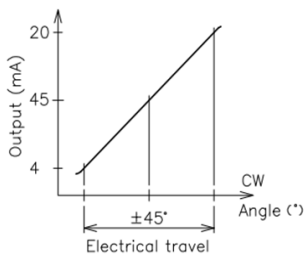
【Material】

- Housing : Aluminum
- Shaft : Stainless Steel
- Ball Bearing : Stainless Steel

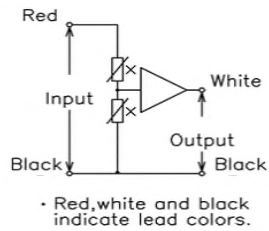
■ Dimension (mm)



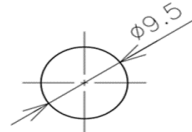
■ Output Characteristics



■ Schematic



■ Mounting



[Model No.]	CP-16U
--------------------	---------------

Electrical Specifications	
Effective Electrical Travel	±45°
Output Sensitivity	0.35~0.65%Vin/°
Independent Linearity	±1.5%FS
Input Voltage	DC3V ~ 5.5V
Current Consumption	0.6mA MAX.
Load Resistance	100KΩ MIN.
Temp. Characteristics -30~+100°C (Reference Temp. 25°C)	@0°Position: ±0.9° @±45°Position: ±7°
Insulation Resistance	100MΩMIN./DC500V
Dielectric Strength	AC500V/1Minute

Mechanical Specifications	
Total Mechanical Travel	360° Endless
Torque	0.1mN · m MAX.
Thrust Load Tolerance	1N
Radial Load Tolerance	5N
Mass	Approx. 10g

Environmental Specifications	
Life Cycles	10 Million cycles MIN.
Category Temperature Range	-30~+100°C
Storage Temperature Range	-40~+100°C
Vibration	200m/S ² 5~500Hz(20min) 3axis 2hours each
Shock	1000m/S ² 11ms 3axis 3times
EMS	25V/m 1MHz ~ 1GHz (IEC11452-2, -3)
ESD (Cast to Each Terminal)	±4KV (IEC61000-4-2)
ESD (Each Terminal)	±8KV (IEC61000-4-2)

■ Options

- Temperature Compensating Range: -20 ~ 80 °C
- Effective Electrical Travel: 120° (Independent Linearity: ±2.5%FS)

■ Accessories

M9 nut

Inner tooth lock washer 1piece each

■ Handling Instruction

- Do not use this sensor as a variable resistor.
- This product may be influenced from external magnetic field.
- Use this sensor in the place where is protected from ESD.

