

Contactless Hall-IC Angle Sensor

CP-2HA Series

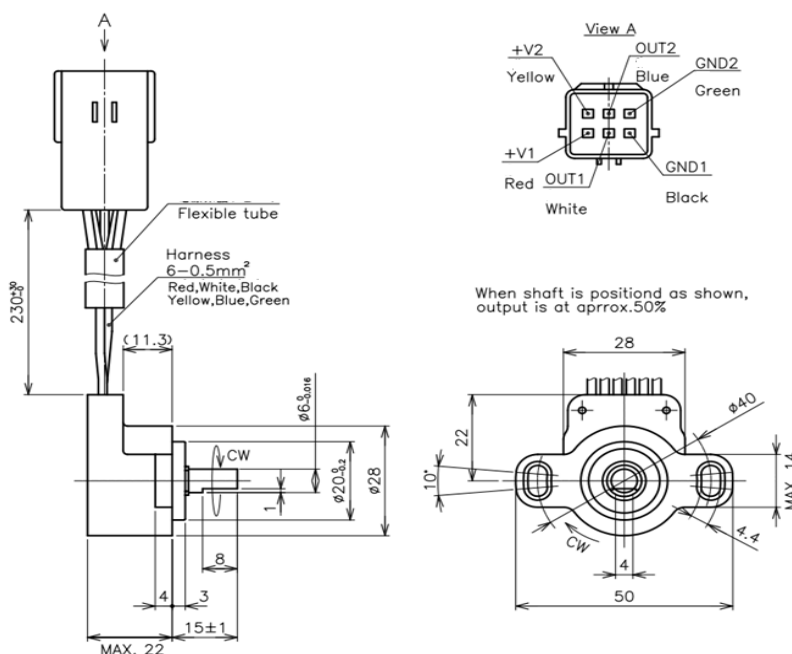


- Contactless Hall-IC Angle Sensor
- Effective Electrical Travel : $\pm 350^\circ$ (Option: $60^\circ \sim 359.9^\circ$)
- Absolute Linearity : $\pm 1\%FS$ (Independent Linearity $\pm 0.5\%FS$)

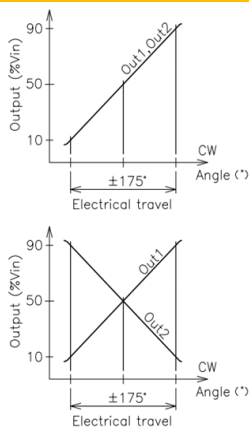
[Material]

- Housing : PBT
- Shaft : Stainless Steel
- Bearing : Copper Alloy

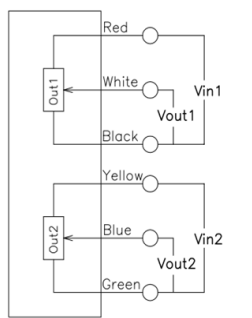
Dimension (mm)



Output Characteristics

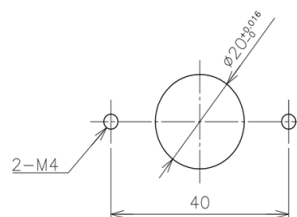


Schematic



• Red,White,Black,Yellow,Blue,Green indicate harness colors.

Mounting



[Model No.]	CP-2HA
--------------------	---------------

Electrical Specifications	
Effective Electrical Travel	350° (Option: 60°~360° :ded angle 0.1° MAX.)
Output Range	10%~90%Vin
Absolute Linearity	±1%FS FS=350° (=Independent Linearity: ±0.5%FS)
Input Voltage	DC5V±0.5V
Load Resistance	10KΩ MIN.
Supply Current	32mA MAX. (Single Output: 16mA MAX.)
Insulation Resistance	100MΩ / DC50V MIN.
Output Resolution	12bit (0~100%Vin)
Hysteresis	0.2%FS MAX.
Temp. Characteristics : -40~125°C	±2.45° (Reference Temp. 25°C)
2 Output Difference (Parallel Output)	±2% FS

Mechanical Specifications	
Total Mechanical Travel	360° Endless
Torque	180mN · m
Thrust Load Tolerance	3 N
Radial Load Tolerance	4N
Mass	Approx. 40g

Environmental Specifications	
Life Cycles	10 Million cycles MIN.
Category Temperature Range	-20~+100°C
Storage Temperature Range	-20~+100°C
Vibration	110.7m/S ² 18~2000Hz(6min), 3axis 8hours
Shock	294m/S ² 11ms 3axis 3times
EMS	100V/m 200MHz~1GHz
ESD (Cast to Each Terminal)	±6 (IEC61000-4-2)
ESD (Each Terminal)	±6 (IEC61000-4-2)
IP Level	IP65

■ Options

- W/O AMP Connector
- Single Output (3 wires)
- Phase Output

■ Handling Instruction

- Do not use Hall-IC sensor as a variable resistor.
- This product may be influenced from external magnetic field.
- Use this sensor in the place where is protected from ESD.